



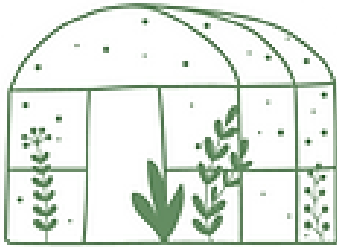
## POLYTUNNELS KENMARE



in association with



MADE IN ITALY



## POLYTUNNELS KENMARE

At PolyTunnels Kenmare, we are dedicated to serving a wide range of customers, from private households and farmers to businesses seeking reliable and versatile gardening solutions. Our comprehensive selection of small domestic polytunnels, large tunnels, and greenhouses caters to the diverse needs and aspirations of our valued clients.

Whether you're an enthusiastic homeowner looking to cultivate a vibrant garden oasis, a forward-thinking farmer aiming to optimize crop production and protect your harvests, or a business owner seeking to enhance your commercial growing operations, our premium structures are meticulously designed to exceed your expectations.

With our commitment to exceptional quality, innovation, and customer satisfaction, we strive to be your trusted partner in creating flourishing environments that unlock the full potential of your gardening aspirations, no matter the scale or purpose.

Contact us for your personal quotation:

Phone Dan: 087 2432157

Phone Ben: 087 3892991

Email: [polytunnelskenmare@gmail.com](mailto:polytunnelskenmare@gmail.com)

[www.polytunnelskenmare.com](http://www.polytunnelskenmare.com)



All of our Domestic Polytunnels are made to order in our workshop and supplied as a complete kit ready to be constructed onto a soil base. You can personalise your tunnel with optional extras available for you to create your perfect growing space.

## Domestic Polytunnels

Small to mid-size domestic polytunnel - great for beginners

<b>Dimensions</b>	2.4 meters wide x 3 Meters long
<b>Dimensions</b>	2.4 meters wide x 5 meters long
<b>Dimensions</b>	2.4 meters wide x 7 meters long



## Large Domestic Polytunnel Range

Perfect for year round crops

<b>Dimensions</b>	4.6 meters wide x 7 meters long
<b>Dimensions</b>	4.6 meters wide x 9 meters long
<b>Dimensions</b>	4.6 meters wide x 11 meters long
<b>Dimensions</b>	4.6 meters wide x 13 meters long

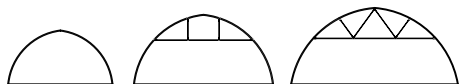






## Tunnelart

Curved wall greenhouse - the classic shape for growing

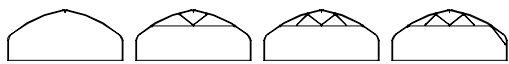


<b>Width (mm)</b>	6000 8000 9600
<b>Useful height (m)</b>	From 2.10 up to 2.70
<b>Arch spacing (m)</b>	1,00 1,50 2,00 2,50
<b>Arches</b>	Ø 42/60 x 1,5/2,0mm
<b>Truss</b>	Ø 32/42 x 1,5mm
<b>Purlins</b>	Ø 32 x 1,5mm



## Easyart

Vertical wall greenhouse at the best price

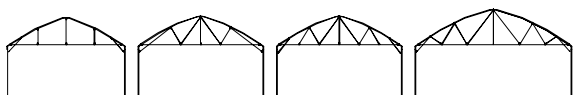


<b>Width (mm)</b>	6400 7200 8000 8800 9600
<b>Pillar height (mm)</b>	From 1,20 up to 1,90
<b>Useful height (m)</b>	From 2.10 up to 3.00
<b>Arch spacing (m)</b>	1,00 1,50 2,00 2,50
<b>Arches</b>	Ø 60 x 1,5/2,0mm
<b>Truss</b>	Ø 32/42 x 1,5mm
<b>Pillars</b>	Ø 60 x 1,5/2,0mm



## Tunnel GT (with side gutters)

Vertical wall, technologic and bigger greenhouse



<b>Width (mm)</b>	6000 8000 9600 12000 12800
<b>Useful height (m)</b>	From 2.50 up to 3.50
<b>Arch spacing (m)</b>	1,50 2,00 2,50
<b>Arches</b>	Ø 60/76 x 1,5/2,0mm
<b>Truss</b>	Ø 32/42 x 1,5mm
<b>Pillars</b>	Ø 80x80 x 2/3mm





## Multiart

High technology for the greatest productivity



<b>Width (mm)</b>	6400 8000 9000 9600 12000 12800
<b>Useful height (m)</b>	From 2.50 up to 6.00
<b>Arch spacing (m)</b>	2,00 2,50 3,00
<b>Arches</b>	Ø 76 x 1,5/2,0mm
<b>Truss</b>	Ø 32/42 x 1,5/2,0mm
<b>Pillars</b>	80x80 x 2,0/3,0mm



## Multimed

Multi-span with best quality/price

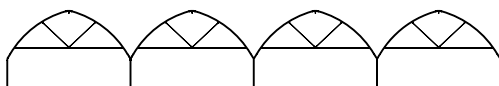


<b>Width (mm)</b>	8000 8500 9000 9600
<b>Useful height (m)</b>	From 2.50 up to 3.50
<b>Arch spacing (m)</b>	2,00 2,50
<b>Arches</b>	Ø 60 x 1,5/2,0mm
<b>Truss</b>	Ø 32 x 1,5mm
<b>Pillars</b>	Ø 60 x 1,5/2,0/3,0mm

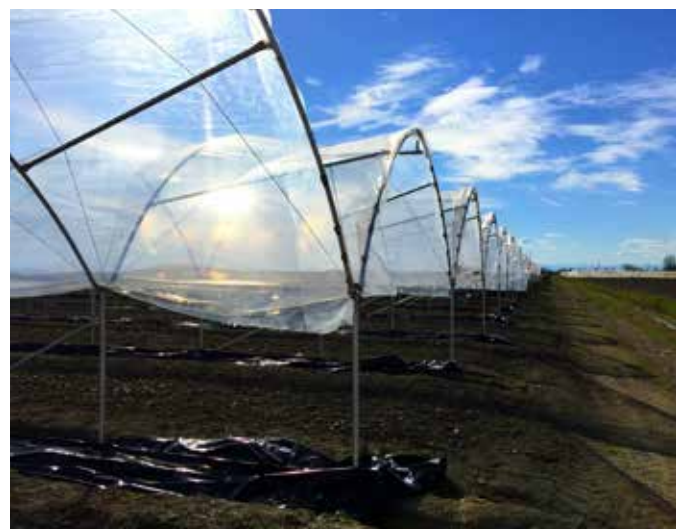


## Multieasy

Cheap and flexible on big surfaces



<b>Width (mm)</b>	6000 6500 7500 8000 8500 9000
<b>Pillar height (m)</b>	From 1.20 up to 1.90
<b>Useul height (m)</b>	From 2.30 up to 3.00
<b>Arch spacing (m)</b>	1,50 2,00 2,50
<b>Arches</b>	Ø 60 x 1,5/2,0mm
<b>Truss</b>	Ø 32 x 1,5mm
<b>Pillars</b>	Ø 60 x 1,5/2,0mm





## Storage shelters

Wide volumes under PVC sheeting

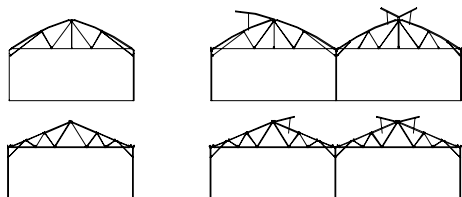


<b>Width (mm)</b>	10200 12000
<b>Useful height (m)</b>	From 5,30 up to 6,00
<b>Arch spacing (m)</b>	1,00 1,50
<b>Arches</b>	Ø 76 x 1,5/2,0mm
<b>Braces</b>	Ø 32/42 x 1,5/2,0mm



## Storeart

Structures with “arch ridge” or “sloped roof”



<b>“Arch-shaped” width (mm)</b>	6400 8000 9000 9600 12000
<b>“Sloped roof” width (mm)</b>	6400 8000 9600
<b>Useful height (m)</b>	From 2.50 up to 6.00
<b>Arch spacing (m)</b>	2,00 2,50 3,00
<b>Arches</b>	Ø 76 x 1,5/2,0mm
<b>Pillars</b>	80x80 x 2,0/3,0mm





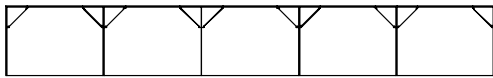
## GARDEN CENTERS

Under the brand GARDENITALIA, Europrogress provides a design and development service of commercial areas for the green area distribution. This service covers both the installation and the supply of bespoke furniture designed by our interior designers.



## SHADE STRUCTURES

Shadehouse for nurseries and other growers.

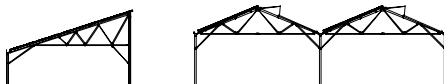


<b>Width (mm)</b>	4000 5000
<b>Useful height (m)</b>	Da 2,00 a 3,50
<b>Arch spacing (m)</b>	4,00 5,00 6,00
<b>Flat roof</b>	Ø 60 x 1,5/2,0mm
<b>Braces</b>	Ø 32 x 1,5mm
<b>Pillars</b>	Ø 60 x 1,5/2,0mm



## PHOTOVOLTAIC

Photovoltaic constructions suited to many kind of crops.



<b>Width (mm)</b>	6400 9600
<b>Useful height (m)</b>	From 2,50 up to 6,00
<b>Arch spacing (m)</b>	2,00 2,50 3,00
<b>Arches</b>	Ø 60 x 1,5/2,0mm
<b>Truss</b>	Ø 32/42 x 1,5/2,0mm
<b>Pillars</b>	80x80 x 2,0/3,0mm



# TECHNICAL FEATURES

## Side vents



Manual crank



Low-effort manual gear



Low-effort telescopic arm



Motor-driven telescopic arm

## Roof vents



Single roof vent



Single 50% roof vent



Gutter single vent



Double (butterfly) roof vent

## Frontal vents and claddings



Roller gable vents



Double layer frontal cladding



Polycarbonate gables

## Foundation



Feet to be screwed into the ground



Feet to be fixed with concrete



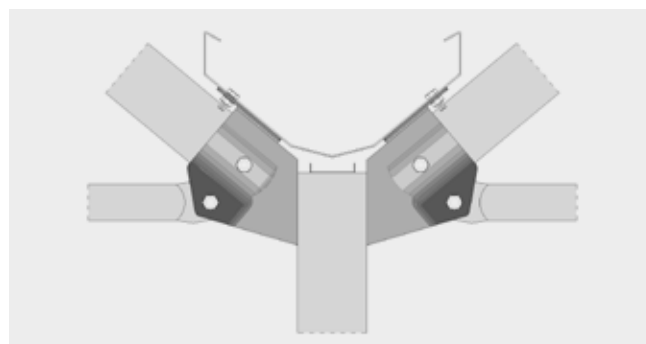
Feet with chemical dowels



# TECHNICAL FEATURES

## **Gutter support**

The gutter support consists of two bent flanges with 30/10 thickness. They are positioned to the right and to the left of the post, respectively, and then bolted together. The shape of the flange allows housing and fastening the semi-arch and the horizontal tie rod. The upper part of the flanges feature bent and holed tabs for gutter support. The system as a whole is sturdy and efficient.



## **Gutter**

The gutter channel manufactured by EUROPROGRESS provides significant benefits, such as high water flow rate. The slightly triangular base conveys condensate centrally towards an underlying collection duct. Depending on the needs, it is supplied with 15/10, 18/10, 20/10 thickness and SENDZMIR 450 or "HOT DIP" galvanisation. It is possible to install angles on the upper tabs where cloth fastening profiles are housed to collect condensate coming from the ridge.



## **Plastic film fastening with ALU/PVC profiles**

The plastic film is rolled out onto the alluminium housing and then blocked by means of a double PVC joint (consisting in M/F bars). This system is mainly used to install a double film covering and its advantages are:

- Greater duration of plastic film due to a lower heating of the profile
- Greater duration of the profile as a result of its anodized aluminium composition.



## **Plastic film fastening with ratchet system**

The film is tensioned by wrapping and then tensioning it on a 30x30 mm tube line. All the mechanical parts (bars + jack) are completely hot zinc coated to avoid any problem of rust and oxidation.

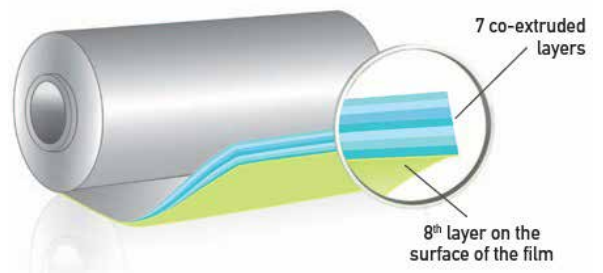
It ensures a perfect and fast tensioning.



# TECHNICAL FEATURES

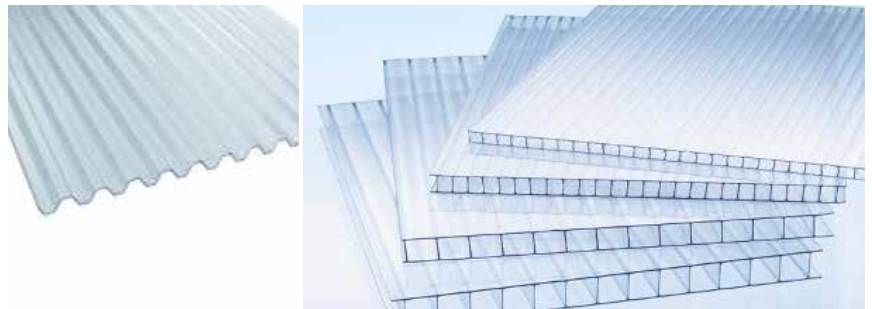
## POLYTHENE FILM

For covering or cladding in single or double layer



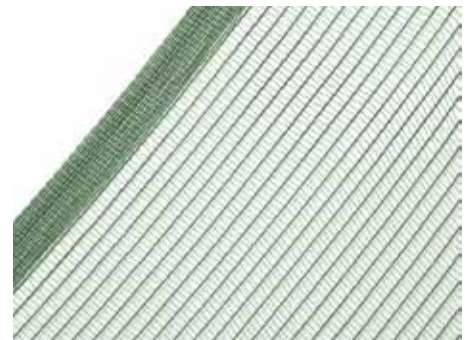
## POLYCARBONATE

Corrugated or cellular polycarbonate



## NETS

Shade and insect netting



## SANDWICH PANEL

40mm or corrugated one for roofing



## HARDAWARE AND SPARE PART



## HEATING SYSTEMS

They can be powered by diesel, gas, biomass or alternative energy sources. Heat is distributed by air or hot water basing on the needs and on the type of installation.



## COOLING SYSTEMS

In some climatic zones such as desert areas it is necessary to the use of cooling systems realized with the help of evaporating panels, air extractors or chillers.



## IRRIGATION AND FERTIGATION SYSTEMS

Spraying irrigation with sliding booms, drip irrigation, ebb and flow irrigation and floating irrigation are all part of our solutions. The fertilisation plant, where required, is carefully designed by our engineers.



## SOILLESS CULTIVATIONS

Cultivations with inert substrates (such as stone wool or coconut fiber) with the help of gutters. Unlike in floriculture or nursery, ebb and flow irrigation or floating irrigation on fixed/mobile benches remains an excellent solution.



## THERMAL INSULATION AND SHADING

Based on the use it is possible to select the most suitable shee-ting for your needs (thermal insulation, shading, combined used). These systems are fully automated and can be installed both under horizontal tie rods and along the walls.







Some information on Europrogress group:

Europrogress is an Italian leading company in the greenhouse manufacturing sector and in the commercialization of systems and technologies for protected crops. Europrogress follows each installation from design to assembly and provides an excellent after sales service.

### **A solution for every need**

The greenhouses are designed in detail to meet the customer's needs considering the cultivation and climatic features of the area

### **Ensure reliability**

Europrogress meets the requirements of UNI EN 13031-1 and UNI EN ISO 9001:2015.

This certification ensures a perfect synchronization in the process steps as well as safety and quality of the services.

Quality Certification allows Europrogress a quick, orderly, secure and reliable growth.



## **POLYTUNNELS KENMARE**





## **POLYTUNNELS KENMARE**

Dromnevane Kenmare - Co. Kerry, Ireland  
Phone Dan: 087 2432157 - Phone Ben: 087 3892991  
Email: [polytunnelskenmare@gmail.com](mailto:polytunnelskenmare@gmail.com)  
[www.polytunnelskenmare.com](http://www.polytunnelskenmare.com)